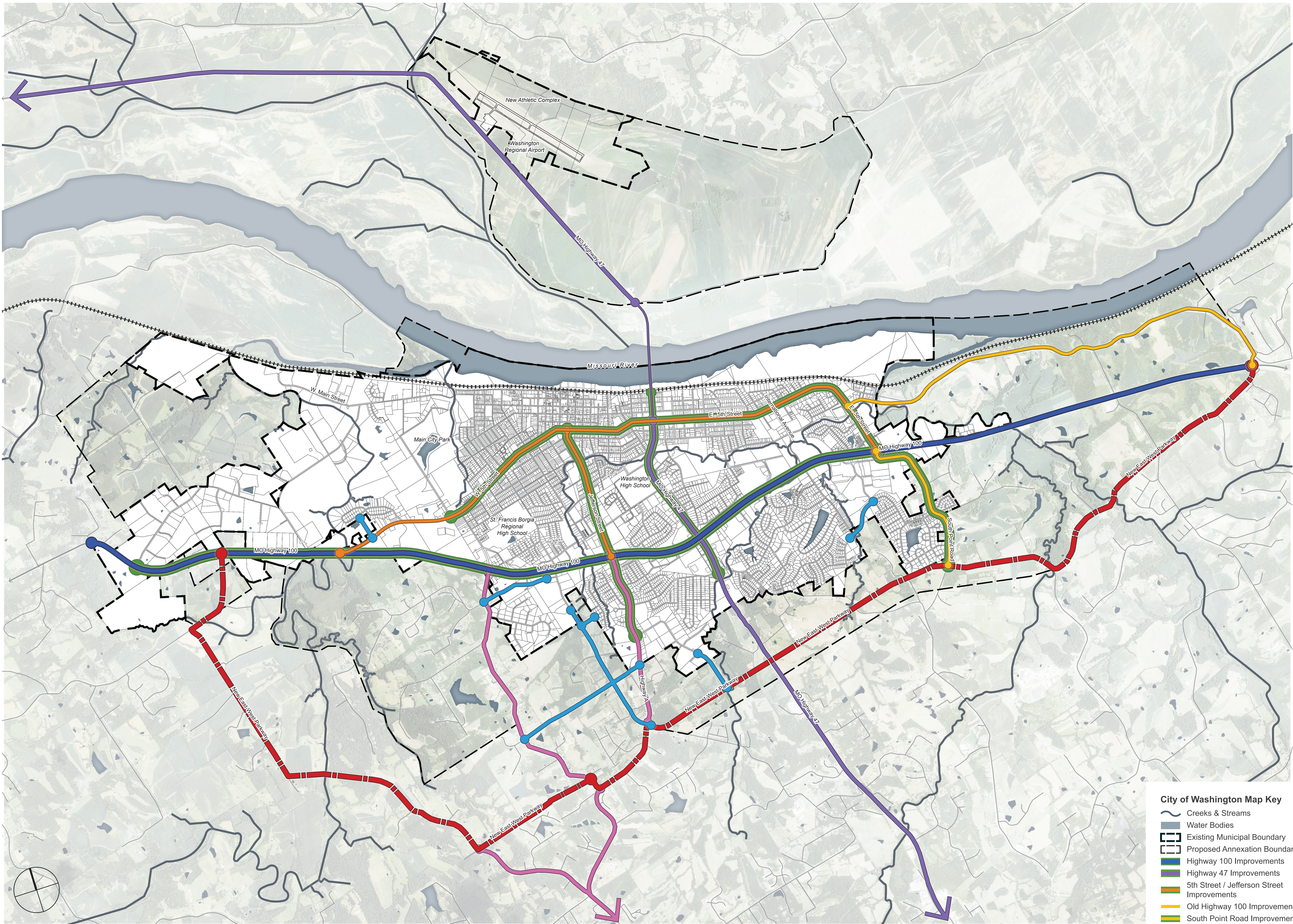


Figure 6.1.1: Streets and Roads Plan



- City of Washington Map Key**
- Creeks & Streams
 - Water Bodies
 - Existing Municipal Boundary
 - Proposed Annexation Boundaries
 - Highway 100 Improvements
 - Highway 47 Improvements
 - 5th Street / Jefferson Street Improvements
 - Old Highway 100 Improvements
 - South Point Road Improvements
 - New Street Connections
 - East-West Parkway
 - Highway A Improvements