

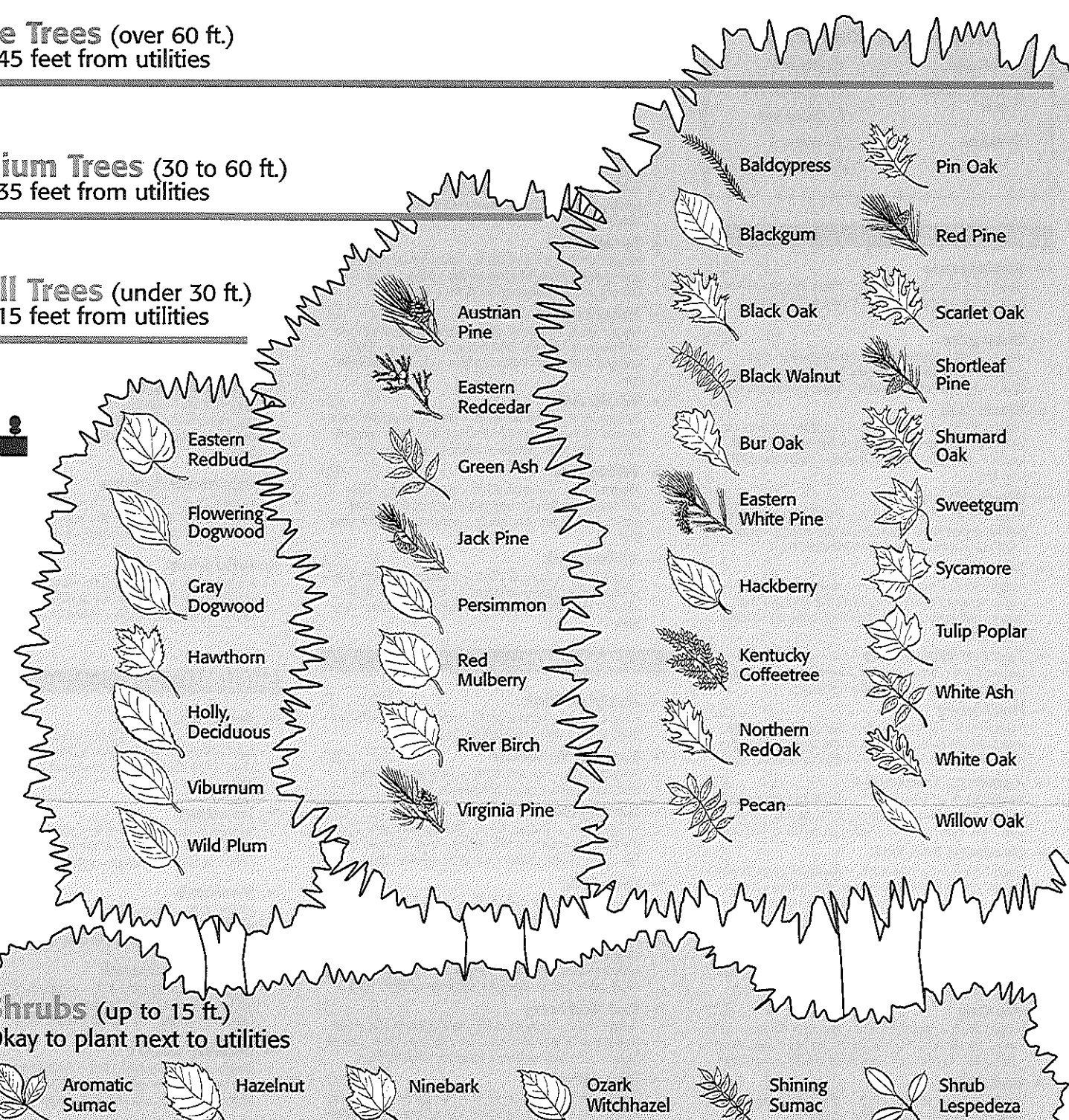
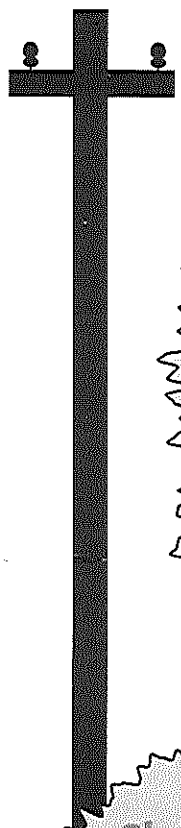
The Right Tree in the Right Place

Trees should be planted away from utility lines, poles and underground utilities at the indicated distances.

Large Trees (over 60 ft.)
Plant 45 feet from utilities

Medium Trees (30 to 60 ft.)
Plant 35 feet from utilities

Small Trees (under 30 ft.)
Plant 15 feet from utilities

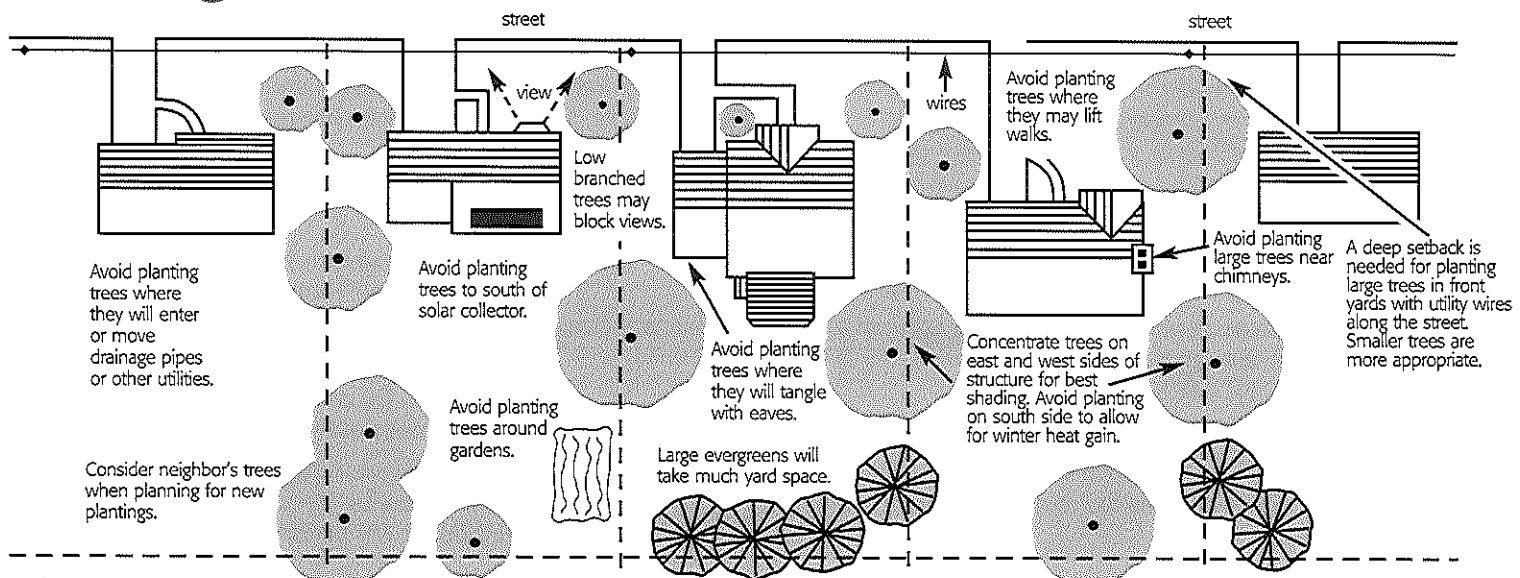


Shrubs (up to 15 ft.)
Okay to plant next to utilities

- Aromatic Sumac
- Hazelnut
- Ninebark
- Ozark Witchhazel
- Shining Sumac
- Shrub Lespedeza

All species shown here are available from the Missouri Department of Conservation. Descriptions of trees are on the reverse.

Planting Trees Around Your House



For further information please contact the Forestry Division of the Missouri Department of Conservation at 573/751-4115 or write to us at P.O. Box 180, Jefferson City, MO 65102-0180.