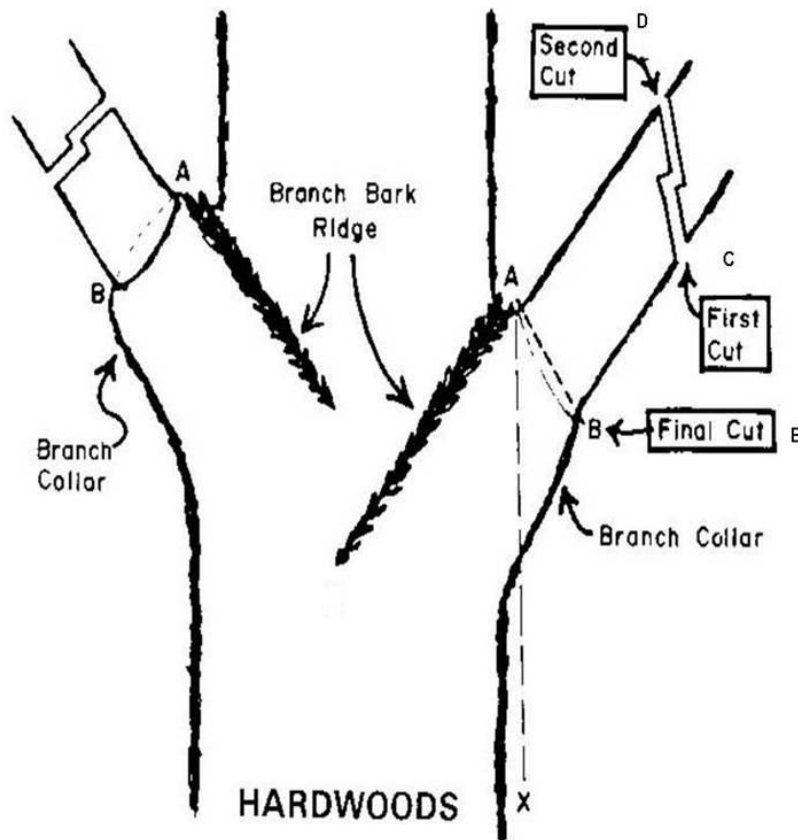
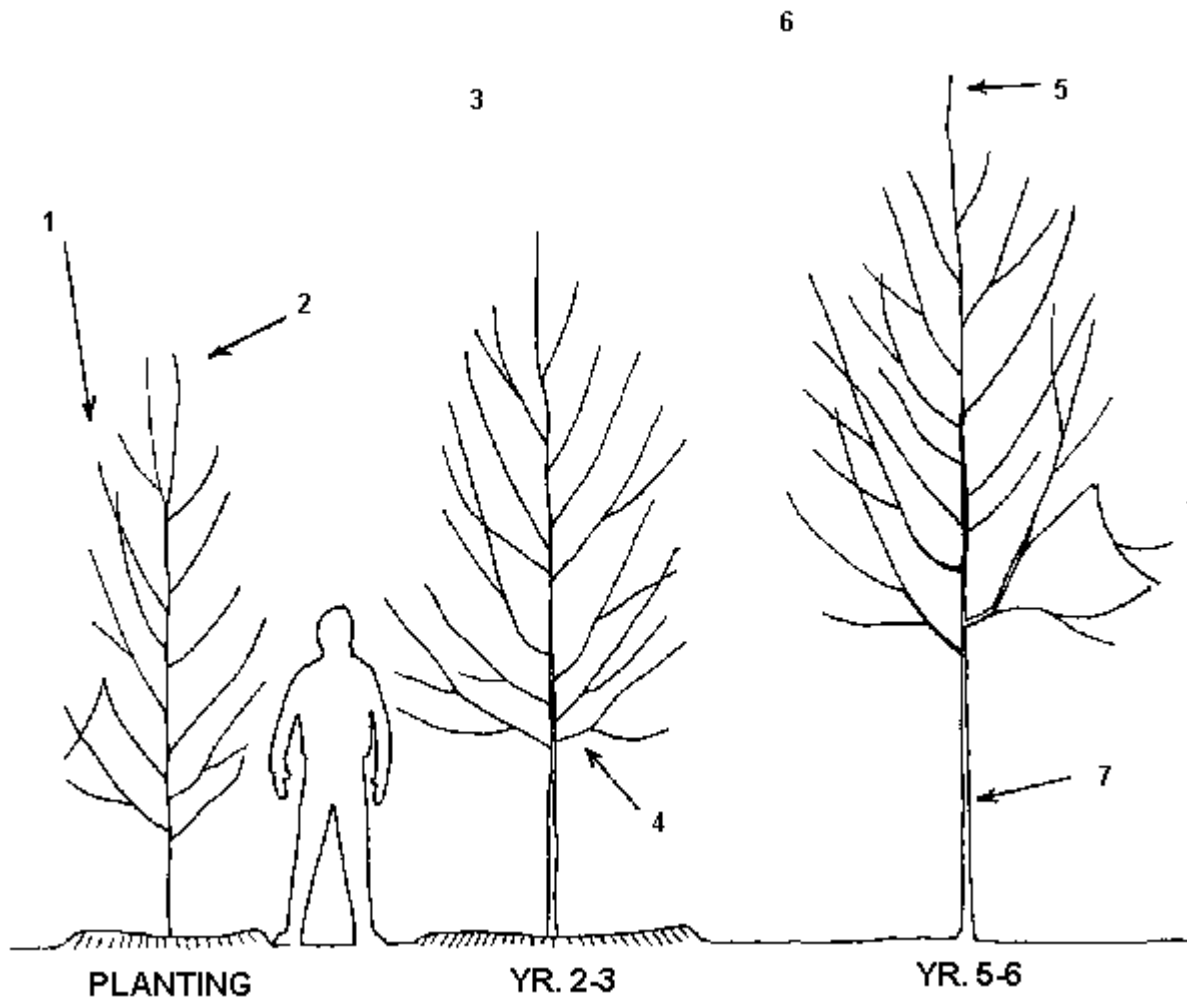


Basic Pruning

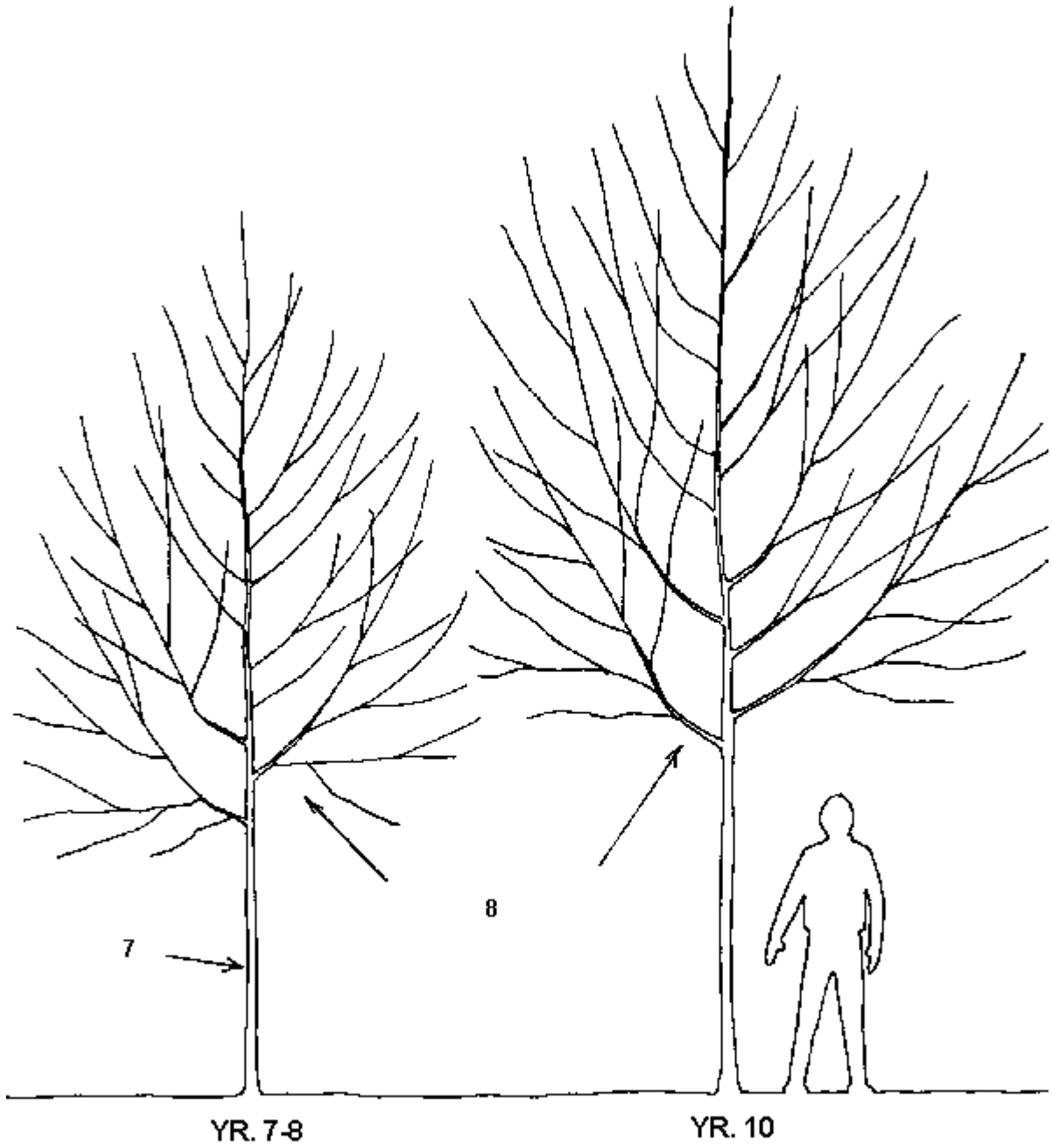
- A. Locate Branch Bark Ridge: a raised ridge of bark where the branch connects to the tree.
- B. Locate Branch Collar: a swollen area of wood underneath the branch, where it joins with the trunk.
- C. Make first cut on the underside of the branch, about 1/3 of the way through.
- D. Make second cut from the top, cutting the branch completely off.
- E. Make the final cut just outside of the branch bark ridge and the branch collar.



TREE PRUNING DIAGRAM



1. Limited Pruning. Remove dead or broken branches.
2. Double Leader
3. Reduce multiple leaders to a single top. Remove narrow, V-shaped crotches.
4. Begin to remove lower branches.
5. Maintain a central leader or single stem for many tree species.
6. Avoid removing more than 1/3 of total branches at one time. Prune weak trees less.
7. Avoid damage to trunk over entire life of tree.



1. Avoid damage to trunk over entire life of tree.
2. Continue to remove lower branches to maximize clearance.